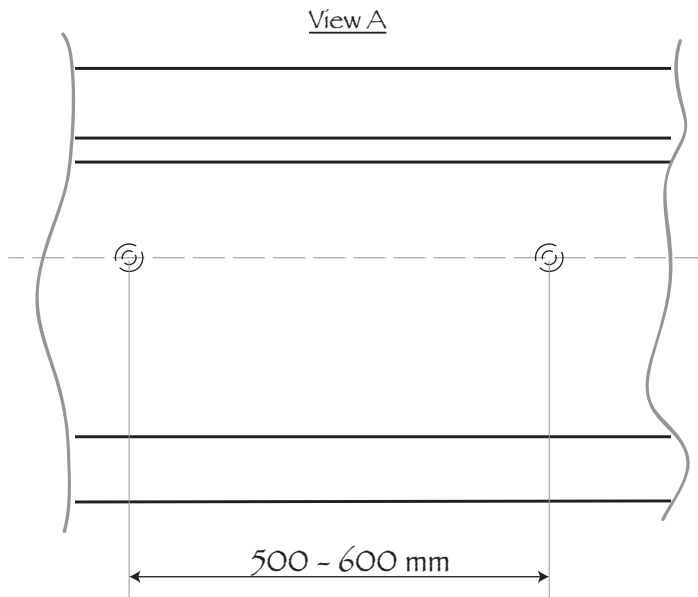
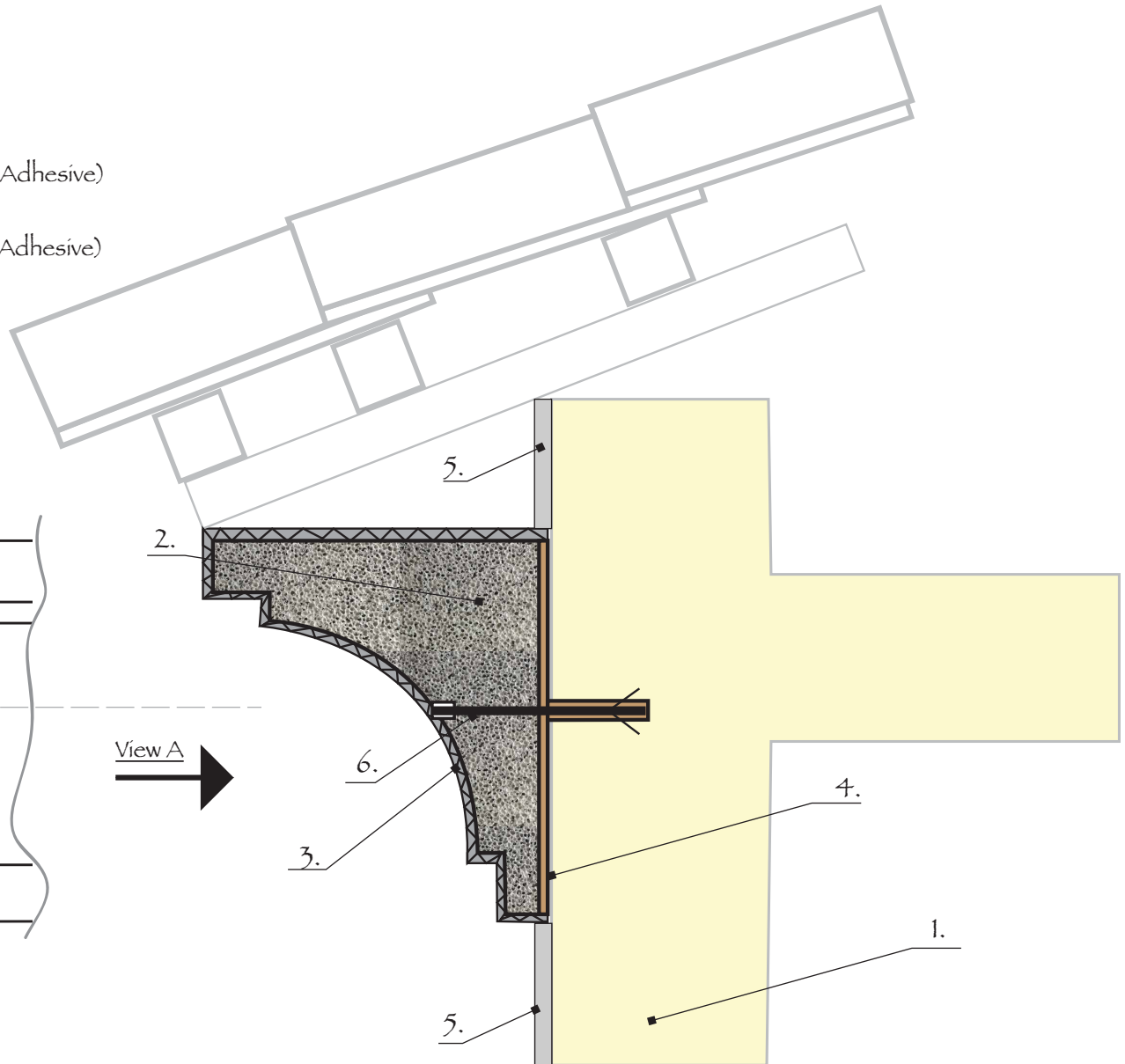


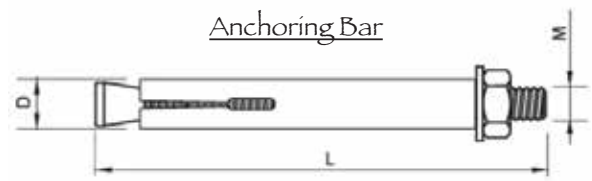
- 1. - RCC Solid Struc-
- 2. - ECOCON Decorative Cornice
- 3. - 2-3 mm lay of facade glue (ECOCON UA Adhesive) reinforced by fibreglass mesh
- 4. - 1-2 mm lay of binding glue (ECOCON UA Adhesive)
- 5. - 20 mm cement-sand external render
- 6. - Anchoring bolt (bar)

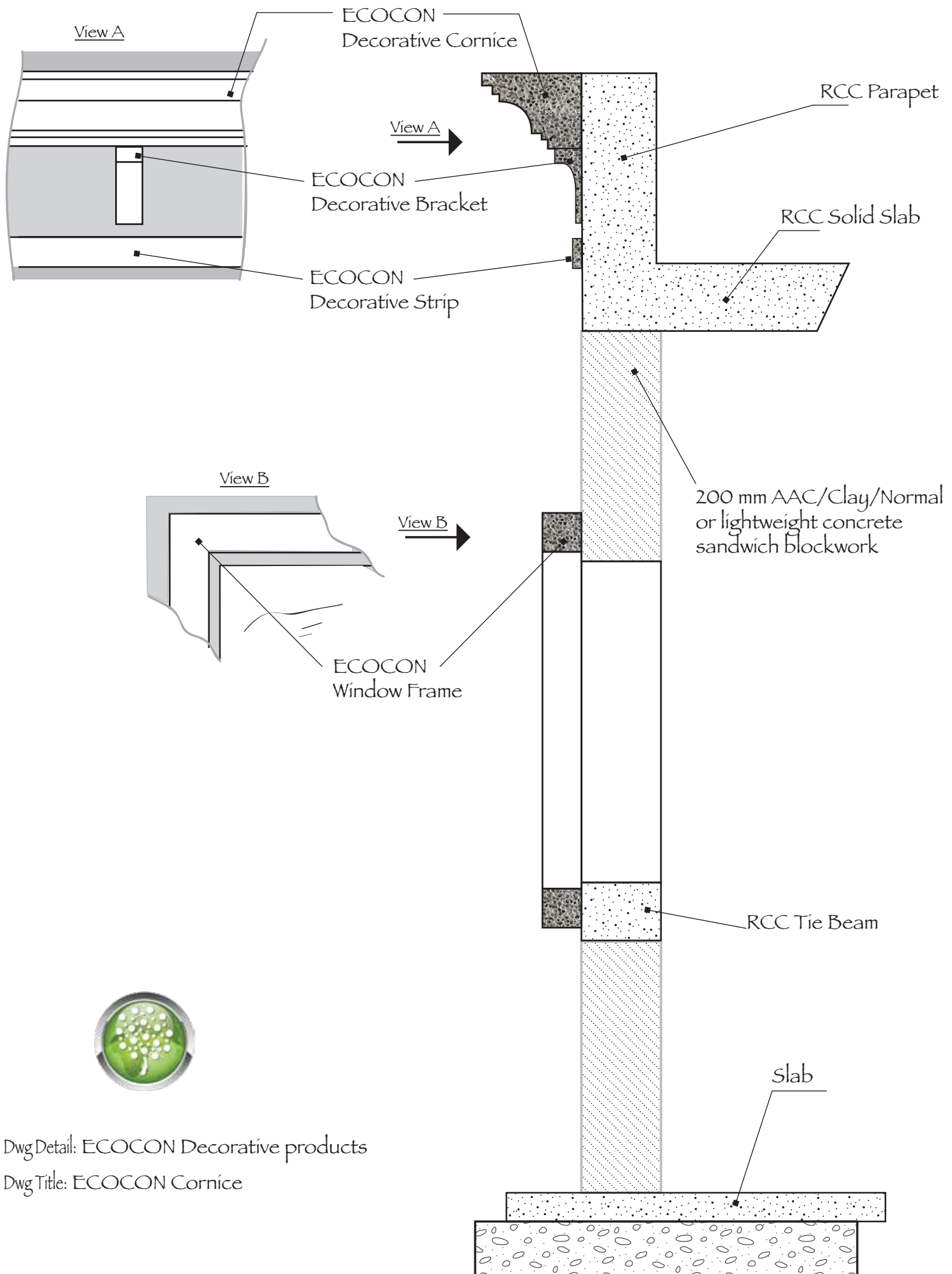


View A →



Dwg Detail: ECOCON Cornice Fixing
 Dwg Title: ECOCON Cornice





Dwg Detail: ECOCON Decorative products

Dwg Title: ECOCON Cornice

